

Dr. Speech[®]

Clinical Software

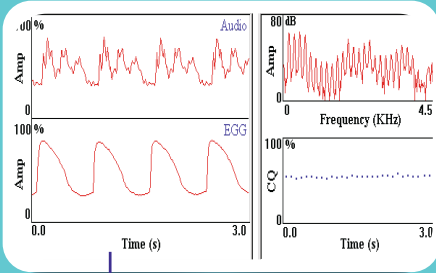


- Voice
- Speech
- Language



Voice Tech

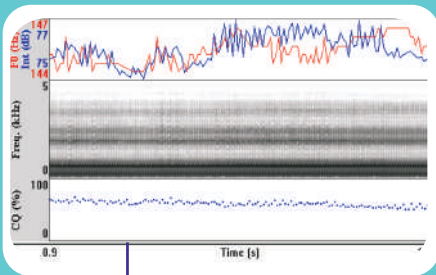
Vocal Assessment



Real-time acoustic & EGG analysis

Voice Data				EGG Data			
(0.0s to 4.6s)							
Habitual F0 (Hz)	324.06	NNE (dB)	-8.47	Habitual F0 (Hz)	324.42	NNE (dB)	-23.23
Jitter (%)	0.37	HNR (dB)	22.92	Jitter (%)	0.40	HNR (dB)	26.47
Shimmer (%)	3.47	SNR (dB)	21.55	Shimmer (%)	1.91	SNR (dB)	25.00
F0 Tremor (Hz)	14.74	Amp Tremor (Hz)	14.74	F0 Tremor (Hz)	5.41	Amp Tremor (Hz)	13.52
Mean F0 (Hz)	324.55	MPT (s)	12.35	Mean F0 (Hz)	324.38	CQ (%)	48.03
SD F0 (Hz)	2.73	sis ratio	1.34	SD F0 (Hz)	2.74	CI	-0.35
Max F0 (Hz)	331.58	Ratio (%)	38.00	Max F0 (Hz)	334.09	OR (%)	67.33
Min F0 (Hz)	317.27			Min F0 (Hz)	317.27	CR (%)	32.57
						COQ (%)	2.05
						CIP (%)	15.20

Vocal Profile



Analysis

Key Features:

- Real-time dual-channel recording
- F0, jitter, shimmer, glottal noise, ratio
- Contact quotient, Contact index
- Spectrogram, spectrum
- Voice quality (hoarse, harsh, breathy)
- Vocal function (regularity, closure time)
- Built-in voice database
- Clinical progress tracking

Vocal Assessment allows the user to record, analyze and display the acoustic and electroglottography(EGG) signals in real-time.

The program will automatically compute statistical information and plot a voice profile from a sustained vowel.

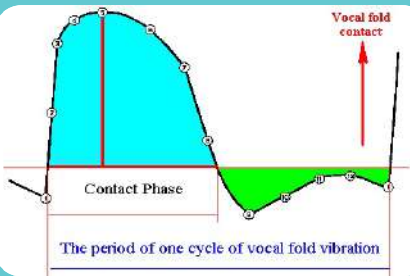
Vocal Assessment provides an objective, noninvasive measures from acoustic and EGG signals. Comparisons can be made with a normative database of 2973 normal voices and 3902 pathological voices. The clinician can monitor if the subject's recording falls within normal limits on the acoustic and EGG parameters and also comparison, preliminary vocal function estimates are made of hoarseness, harshness, breathiness, regularity of vocal fold vibration and glottal closure time.

The Clinical Progress Tracking option can compare the patient report in different sessions and display the numerical values and bar graph / chart. On these observations clinician can monitor the progress of the patient.

Electroglottograph

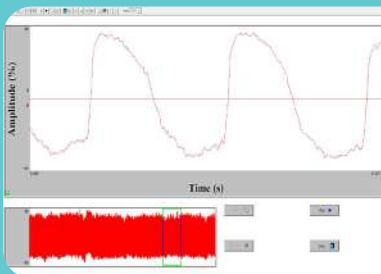
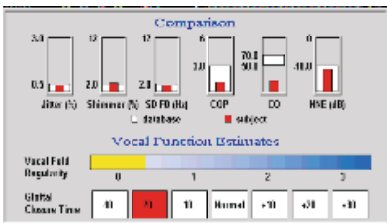


The Electroglottograph is hardware device designed for monitoring of variations of vocal fold contact. It is one of noninvasive methods for obtaining useful information about the vibratory patterns of the vocal folds.



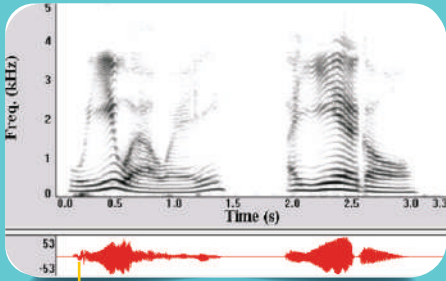
Electroglottograph measurements should be used as substantially complements endoscopy examination in the routine clinical examination.

Human tissue is a moderately good conductor of electricity. A weak, high frequency voltage is applied to one electrode, and the other electrode picks up the electrical current passing through the larynx. The transverse electrical impedance varies with the opening and closing of the glottis, and results in a variation of the electrical current in phase with the vibratory phase of the vocal folds.

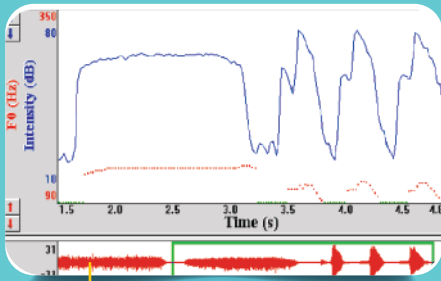


The Electroglottograph has become an increasingly popular clinical and research tool, providing numerous phonatory characteristics including vocal fundamental frequency, the extent of vocal fold during phonation

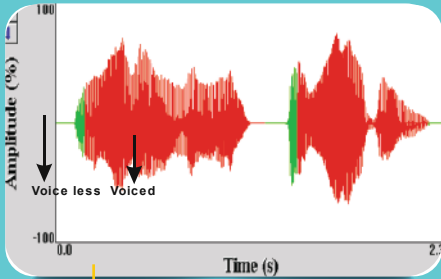
Real Speech



Spectrograph



F0 & Intensity



Speech waveform

Key Features:

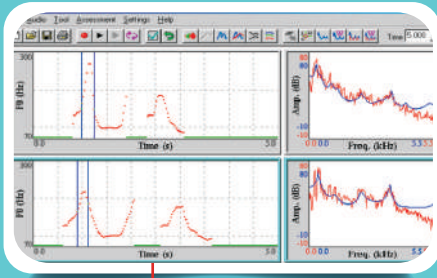
- Real-time spectrogram
- Real-time F0 and intensity
- Real-time power spectrum
- Real-time LPC spectrum
- Real-time vowel tracking
- Real-time speech waveform
- Real-time record and playback
- Model-matching feature
- One-step editing and printing

Real Speech provides real-time visual and auditory feedback of acoustical performances of speakers or singers during speech production. The users find these biofeedback displays to be useful in clinical assessment of speech, teaching dynamic patterns of intonation and patterning linguistic stress contrasts.

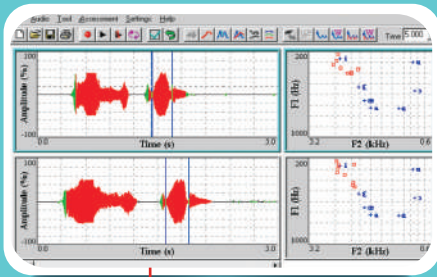
Model-matching feature is the ability to store one of the acoustical patterns of a speech sample, and compares the performance of the client's attempt to match the pattern. This feature is especially significant in real time recording, in which you wish to have real-time speech training based on the preset model.

Real Speech is a real-time biofeedback tool for use in a clinic and educational environment. By providing a wide range of parameters and special features, it can benefit both clinicians and clients to design various therapy techniques. The greatest feature is real-time displays of spectrogram, F0, intensity, vowel tracking, and formant (LPC), etc.

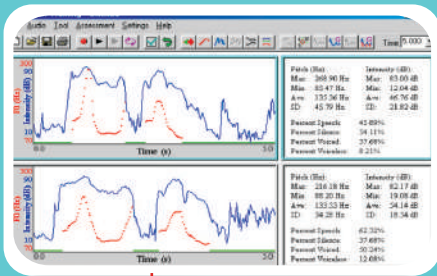
Speech Training Pitch Master



F0 & Spectrum Display



Speech waveform &
Vowel tracking



F0 & intensity;
statistic reports

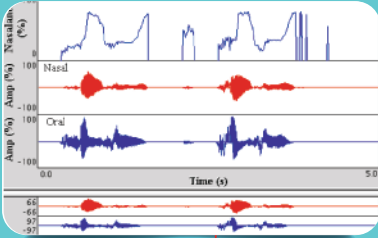
Key Features:

- Real-time capability
- Dual-screen display
- F0 and intensity display
- Spectrogram display
- Formant tracking display
- Speech waveform display
- Power and LPC spectrum
- Dynamic vowel tracking
- Quick statistic report
- ESL training

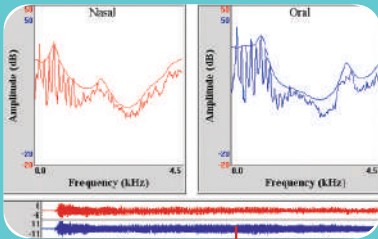
Speech Training / Pitch Master is a powerful clinical and teaching tool that provides highly versatile information for speech assessment and therapy. A dual-screen display allows the clinician to provide a target speech sample on one screen and the patient to match the speech performance on a second screen. The user can record, store, playback, analyze and display special characteristics of the speech samples.

With the easy-to-use capabilities, one click of the mouse allows the user to view the speech waveform, fundamental frequency contour, intensity, or spectrogram in real-time. This program provides visual feedback regarding an acoustic parameter of interest when teaching speech control. Each window can be further analyzed and the results can be displayed in a "view window" on the right of the screen.

Nasal View



Nasalance measure with oral & nasal samples



Power & LPC spectrum display (Oral, Nasal)

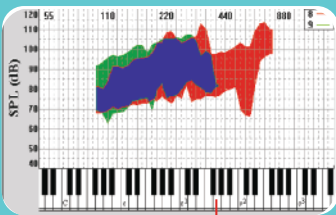
Key Features:

- Real-time biofeedback
- Nasalance & dual oscillograms
- Nasalance statistics & histogram
- Power & LPC spectrum
- Vocal F0 & intensity
- Model-matching features
- Wide & narrow-band spectrogram

Nasal View is the new cost-effective software and hardware system designed for data acquisition, clinical analysis and treatment of nasal resonance disorders. It provides real-time measurements related to hypernasality, hyponasality and nasal emission via a simple graphic display.

Nasal View provides the added convenience and clinical utility of instant playback and database retrieval of all recorded speech samples. In addition, detailed spectral analysis (FFT, LPC, wide & narrow-band spectrograms) is also provided. Treatment of nasal resonance disorders is achieved through user-friendly tasks providing visual and auditory feedback to the patient.

Phonetogram



Comparison of two sessions

Key Features:

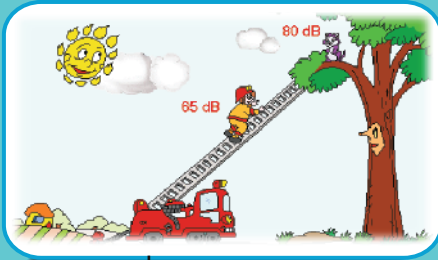
- On-screen piano to play tone
- Power cursors for quick measures
- Comparison of multi- sessions
- Monitor the vocal progress
- Statistic report

Phonetogram displays the dynamic range of the human voice in terms of both fundamental frequency (F0) and intensity (SPL). Speech pathologist, laryngologist, signing teacher and voice scientist find this display to be useful in identifying the limits of vocal function.

Speech / Voice Therapy



Voicing Training



Loudness Training



Maximum Phonation Time

Key Features:

- Biofeedback
- Interactive cartoon
- Over 100 video games
- Phonation
- Statistical report
- Clinical goal settings
- Training for pitch, loudness, voicing, voicing onset, MPT

Speech & Voice Therapy uses over 100 voice-activated video games to provide real-time reinforcement of a client's attempts to produce changes in pitch, loudness, voicing, voicing onset, maximum phonation time, sound, and phonetic exercise.

Children, in particular, enjoy therapy with this colorful, interactive, game-like software because they receive immediate biofeedback on their performance. Clinicians will enjoy the versatility and some unique features of the program. For example, while a patient / child is playing a game, clinician can quickly review the graphical display or statistical data of his performance.

Speech & Voice Therapy is divided into two groups: (1) Exploring section teaches children about the attributes of their voice, and (2) Training section gives children's goals to achieve for a given range and time. Comprehensive user logs calculate therapy time and track your client's progress. Further clinician can create own target as desired during therapy.

Speech Platform / Patient Tools



Aphasia Tool



LD Tool



HI Tool



Fluency Tool

Patient Tools are designed to strengthen attention, memory, and learning skills in individuals with developmental and acquired language and cognitive deficits. These modules can assist to Speech-language pathologists, clinical psychologists, special educators, and teachers for teaching speech language to their clients with their traditional speech therapy. It can also be used by the parents to teach their children and also by the clients themselves for self-learning.

These Patient Tools are available in Windows, Android, Cloud based online speech therapy platform at www.speechplatform.in

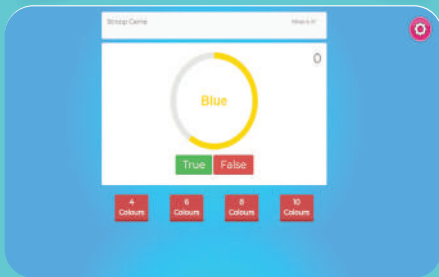
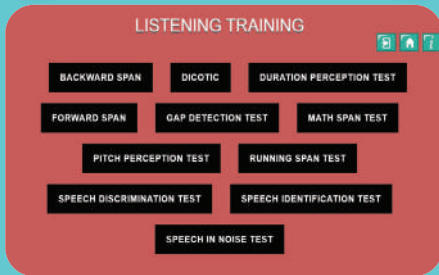
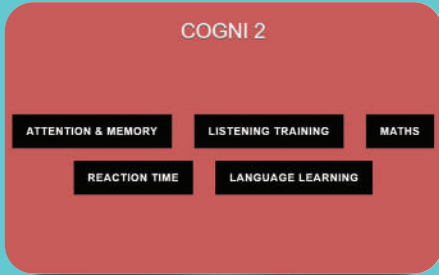
The combination of various activities can be used to train individuals with various communication disorders such as, Spoken Language Disorder, Autism Spectrum Disorder, Learning Disability, Attention Deficit Hyperactivity Disorder, Hearing Impairment, Dementia, and Parkinson's disease.

These modules are available in various languages. It can be use as home therapy lessons to your patient. It has four types HI, LD, Aphasia, and Stuttering in three levels beginner, intermediate and advanced. Each level has designed with various activities in different disorders. It has to use as severity of the disorder.

* Language: Please check language update at our web

* Patient Tools are not intended to replace traditional therapy but it can assist in therapy

Cogni Tools



Key Features:

- Improve reasoning and problem-solving skills
- Train their short-term, long-term, and working memory
- Increase concentration
- Improve pattern recognition
- Enhance spatial recognition
- Improve visual perception
- Improve selective and divided attention
- Increase reaction time
- Improve decision making skills
- Helps in understanding and producing language

Cogni tools software module entail the use of specific exercises, often games, which reputedly improve cognitive performance. The goal of Cogni module is to improve memory, attention, perception, reasoning, planning, judgment, general learning, and overall executive functioning through computerized tasks. Cogni tools software is a collection of modules which can be used to stimulate cognitive functions in a playful way. The modules are designed to strengthen attention, memory, and learning skills in individuals with developmental and acquired language and cognitive deficits. These kinds of abilities are targeted because they are correlated with individual differences such as academic achievement and life outcomes and it is thought that training general cognitive functions will lead to transfer of improvement across a variety of domains.

Attention and
Memory

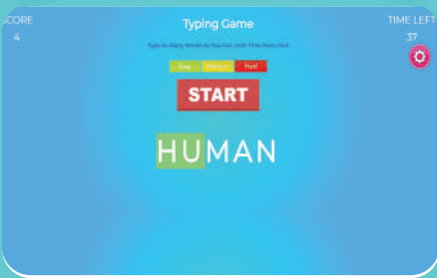
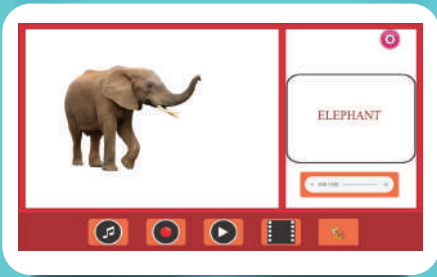
Reaction Time

Listening Training

Language Learning

Maths

Vocab



Key Features:

- More than 900 cartoon pictures
- More than 900 cartoon pictures
- More than 4500 Videos
- Increases reading comprehension
- Teaches critical reading skills
- Increase understanding of objects and their functions
- Generalisation of learned vocabulary
- Build independence in home, community and school or outdoor
- Visual and auditory puzzle
- Typing games

“Vocab” is designed to meet the challenges in the process of learning languages. It helps to practice generalization of any learned vocabulary. It is an alternative to real object in the form of videos. It is a kind of therapeutic intervention program for better prognosis and knowledge growth to individual.

Vocab is uniquely powerful vocabulary building software which aids in personalized word learning on a big data scale. Unlike regularly available vocabulary apps, Vocab not only builds vocabulary but also helps in extension, expansion, encoding, and decoding. According to researchers, the best way to learn new words is to associate them with something already you know. With this premise, the framework of Vocab inculcates word learning in association with phonology spoken form (auditory), orthography written form (visual), semantics meaning and concept, and syntax grammatical function.

It can also be used by the parents to teach their children and also by the client himself for self-learning. One of the major advantages of Vocab is that it is designed in a few Indian languages.

SH Kiosks

Kiosks provide an effective out-of-office advertising platform to reach patients in places such as shopping malls, colleges, cafes, airports, office buildings and trade shows. A kiosk refers to a small, temporary, stand-alone booth used for marketing purposes.



Key Features:

- Hearing, speech and language related screening
- Cognitive screening
- Relay the results to the professionals
- Market your business without additional advertising costs

Speech Therapy Zone

Server based system for ten students designed for treatment of various speech, language therapy activities with each child progress report. It is designed for Deaf and MR school, CP, Autism Centre and Speech rehab clinics.



Hardware

- Complete server setup for Ten students
- Built-in speech Trainer with Head- phone with PC-10Nos
- 22Inch monitors for ten Multimedia PCs
- 20Minitues UPS backup for Main server -1No
- Photo-smart Printer-1No
- CVT for Voltage Fluctuation – 10Nos
- Windows 10 Licensed Server Software-1No
- Includes LAN cable wiring

Clinicals Tools

Vocal Assessment

Electroglottograph

Real Speech

Speech Training / Pitch Master

Nasal View

Speech / Voice Therapy

Speech Platform / Patient Tools

Cogni Tools

Vocab

SH Kiosks

Speech Therapy Zone

Tiger DRS, Inc.

Po Box 75063,
Seattle, WA 98125, USA
e-mail : tiger_electronics@att.net
www.drspeech.com

35, 2nd Floor, Surve Ind. Estate, Opp. Pradnya Bodhini School
Goregaon (E), Mumbai - 400 063, India

Tel: 022-26853180

☎/Mob.- 9821330996

sales@voicetech.in

www.voicetech.in

www.speechplatform.in

Voice Tech